

# Assessing and Evaluating Competence Through the Curriculum

WEBINAR POLL RESULTS

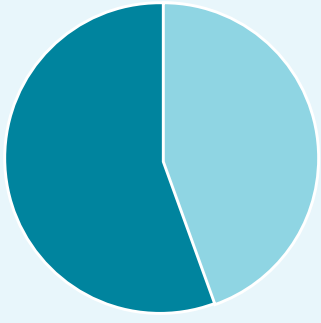
Source: *Assessing and Evaluating Competence Through the Curriculum Webinar*

## Utilizing evaluation tools for high-fidelity simulations



Does your organization utilize evaluation tools for *formative* assessment of high-fidelity simulations?

YES  
55%

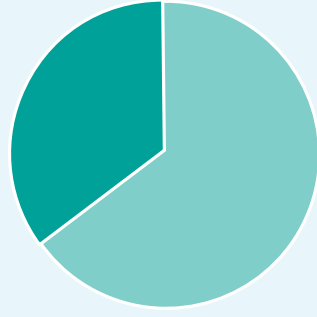


NO  
45%



Does your organization utilize evaluation tools for *summative* assessment of high-fidelity simulations?

YES  
35%



NO  
65%



## Which evaluation instruments does your organization utilize?

21%

SIMULATION EFFECTIVENESS TOOL - MODIFIED (SET-M)

50%

OUR ORGANIZATION HAS ITS OWN EVALUATION RUBRIC

20%

DEBRIEFING ASSESSMENT FOR SIMULATION IN HEALTHCARE® (DASH)

14%

CREIGHTON COMPETENCY EVALUATION INSTRUMENT (C-CEI®)

2%

NLN STUDENT SATISFACTION AND SELF CONFIDENCE IN LEARNING

8%

LASATER CLINICAL JUDGMENT RUBRIC

23%

Are using a combination of these

20%

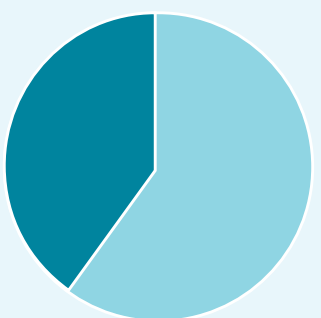
OUR ORGANIZATION DOES NOT EVALUATE AT THIS TIME

## Collecting and analyzing data for skills training



Does your organization collect and analyze *formative* data in your skills practice sessions?

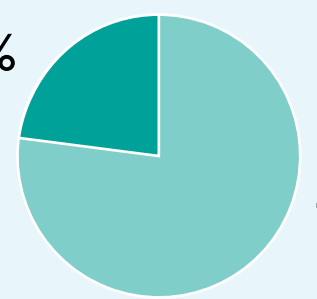
YES  
40%



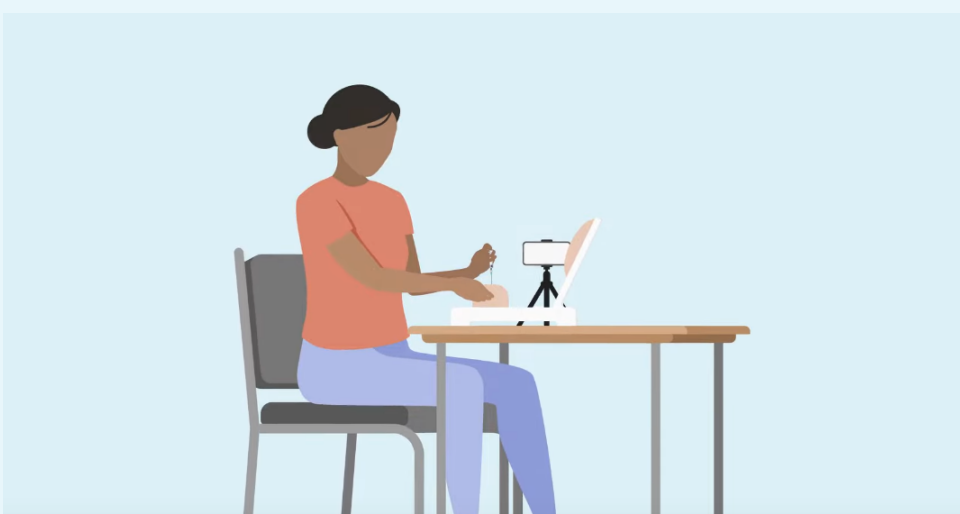
NO  
60%

Does your organization collect and analyze data on *summative* skill performance?

YES  
23%

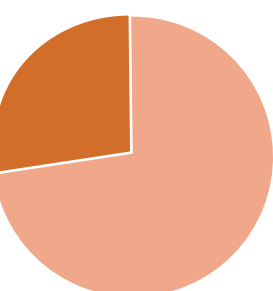


NO  
77%



Does your organization employ a deliberate peer-to-peer methodology as part of your curricula?

YES  
27%



NO  
73%



Are you ready to start leveraging the power of data to transform your teaching approach?

We can help.

[Laerdal.com/SimCapture](http://Laerdal.com/SimCapture)



# Assessing and Evaluating Competence Through the Curriculum

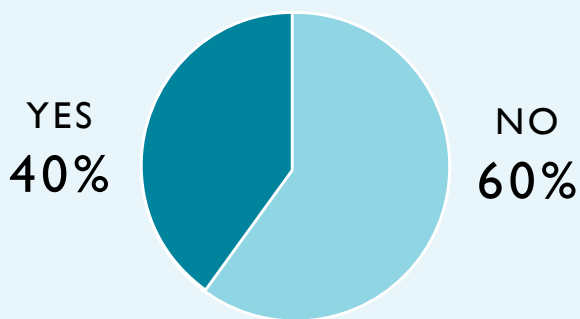
WEBINAR POLL RESULTS

Source: *Assessing and Evaluating Competence Through the Curriculum Webinar*

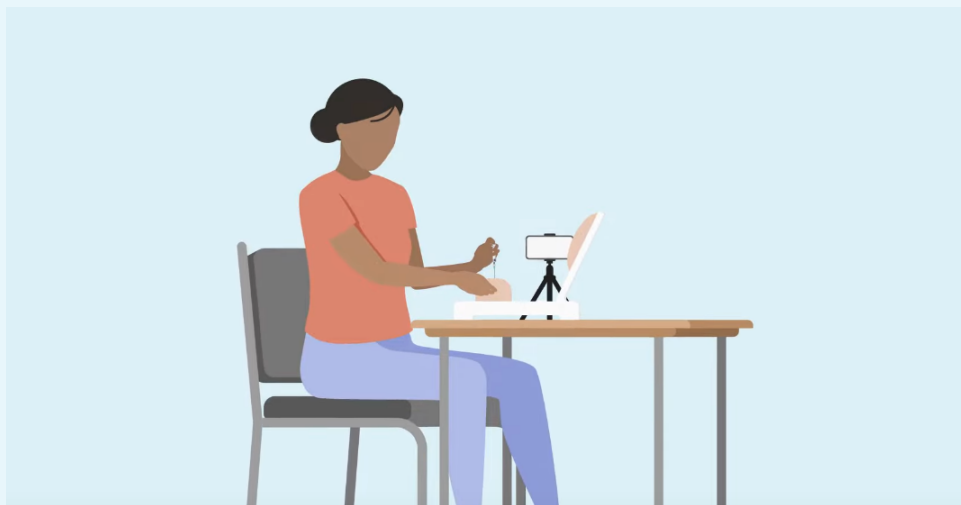
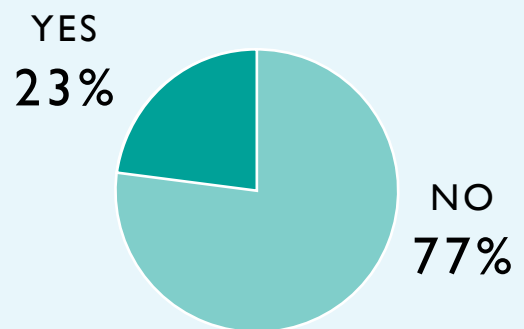
## Collecting and analyzing data for skills training



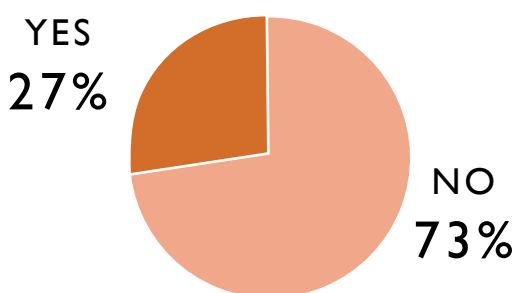
Does your organization collect and analyze *formative* data in your skills practice sessions?



Does your organization collect and analyze data on *summative* skill performance?



Does your organization employ a deliberate peer-to-peer methodology as part of your curricula?



Are you ready to start leveraging the power of data to transform your teaching approach?

We can help.

[Laerdal.com/SimCaptureforSkills](https://Laerdal.com/SimCaptureforSkills)